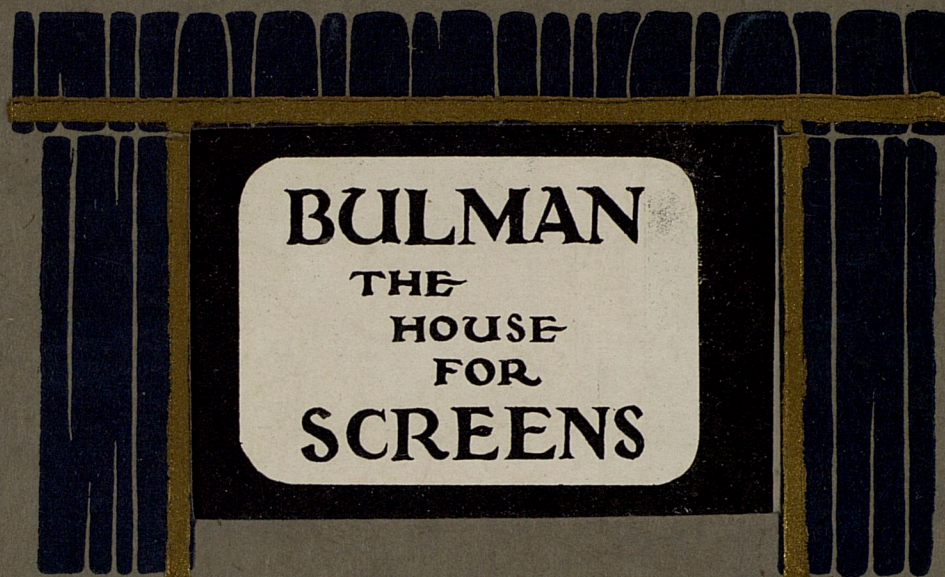


BULMAN CINEMA SCREEN CO.,

46, GERRARD ST.,

LONDON, W.1.



SCREENS
by BULMAN

ALL PERFECT PICTURES
ARE PROJECTED ON OUR
FAMOUS FRONT AND REAR
PROJECTION SCREENS

BULMAN
THE
HOUSE
FOR
SCREENS



BULMAN SCREENS

Established 1907.

STILL MAKING THE FINEST SCREENS
ON THE MARKET.

FRONT & REAR PROJECTION
EXPERTS & TECHNICAL
ADVISERS.

Telephones :
Regent 3309-10.
Clissold 4778 (night)

Studios :
Stamford Hill,
& Enfield.

W.D.
8°
107
BR

CAPITOL THEATRE, HAYMARKET.



A MONTH AFTER THIS THEATRE OPENED

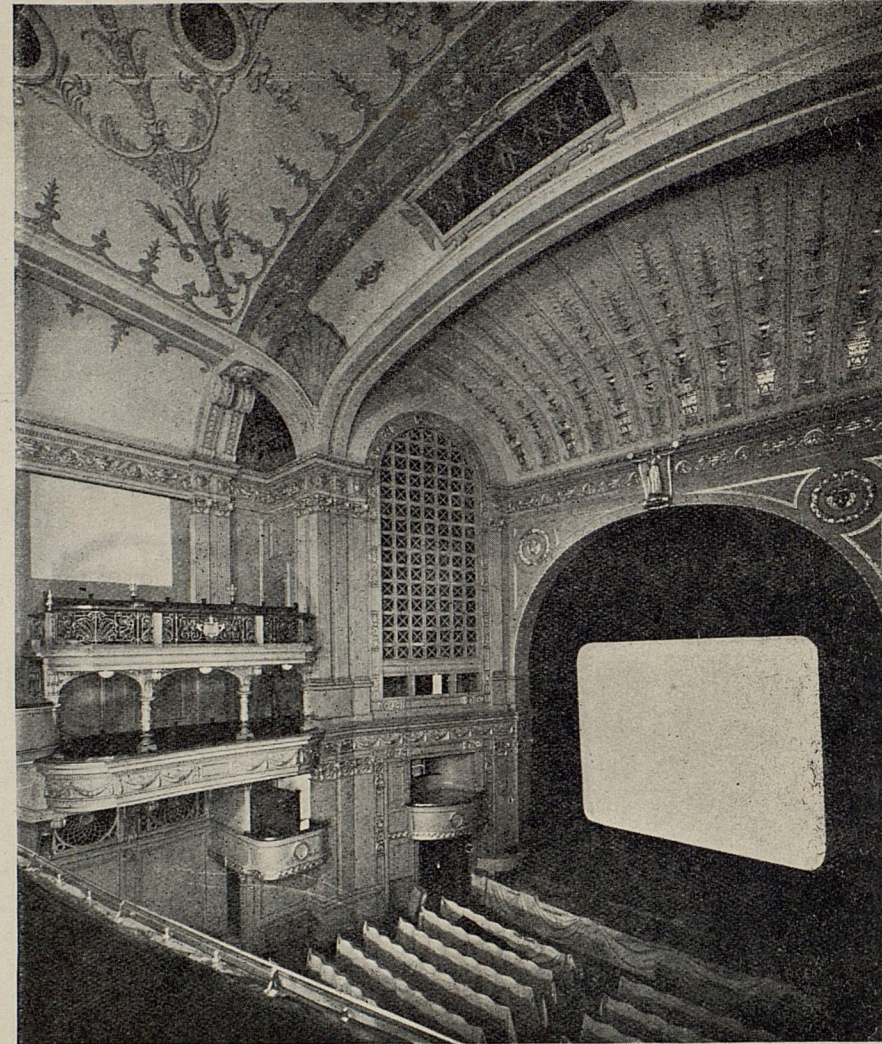
A

BULMAN SCREEN

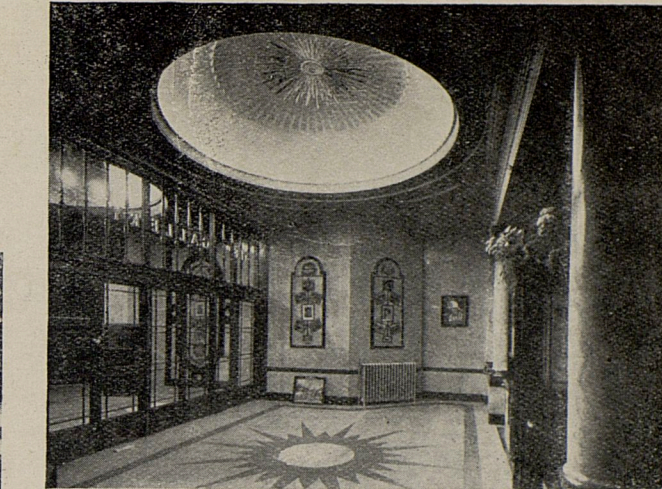
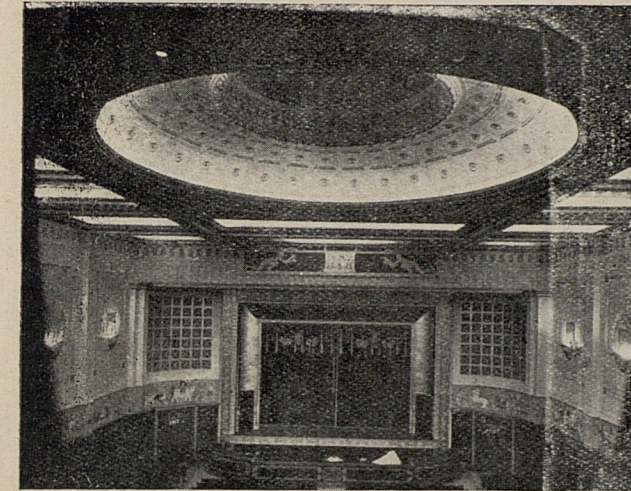
WAS INSTALLED!

WHY?

BECAUSE THE RIGHT SCREEN MEANS PERFECT PROJECTION.



NEW GALLERY KINEMA.



These illustrations are by the courtesy of the General Electric Co., Ltd., who supplied the whole electric light equipment of the New Gallery Kinema.



ALSO

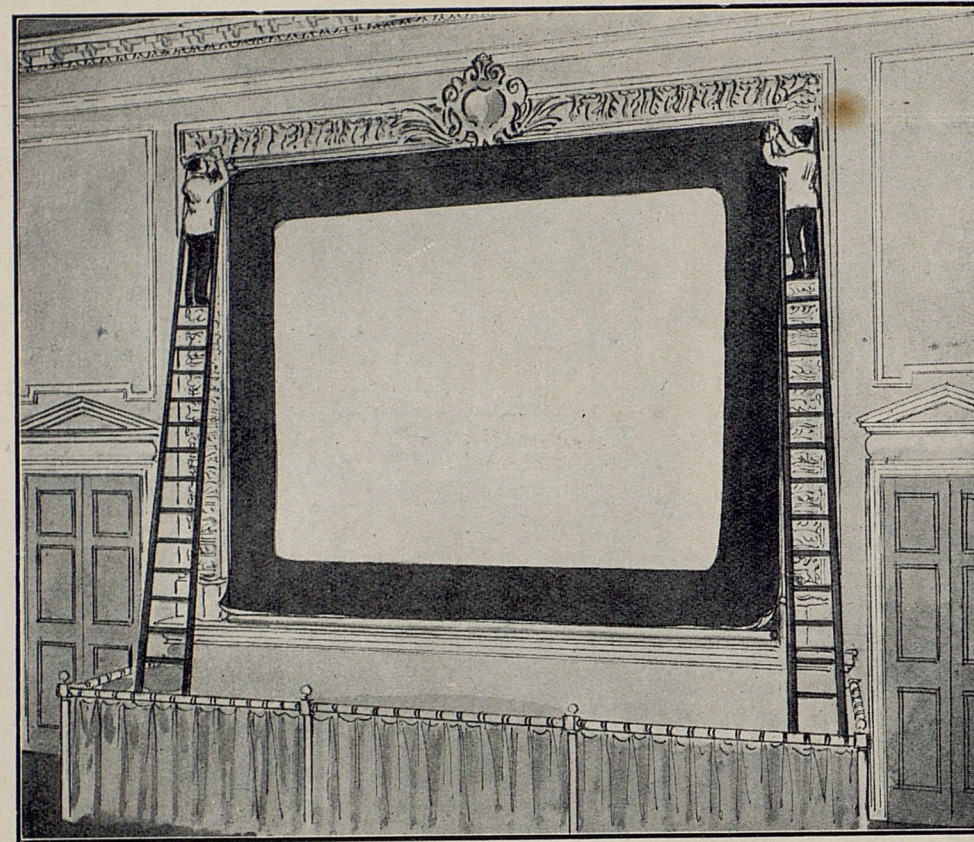
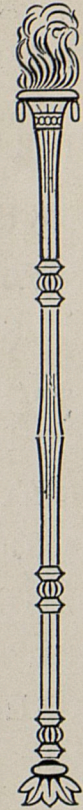
PALACE THEATRE, RAMSGATE
PALACE THEATRE, KENTISH TOWN
PALACE THEATRE, GLOSSOP
PALACE THEATRE, TROWBRIDGE
PALACE THEATRE, BRIDGEWATER
PALACE THEATRE, SAILSBURY
PALACE THEATRE, CHIPPENHAM
PALACE THEATRE, FROME

PALACE THEATRE, LEIGH
PALACE DE LUXE, LIVERPOOL
PALLADIUM, WHITCHURCH
PREMIER ELECTRIC, ILFORD
PUBLIC HALL, ERITH
QUEENS PICTURE HOUSE,
WOLVERHAMPTON
REGENT THEATRE, BRIGHTON

ALBERT HALL, LONDON
STOLL OPERA HOUSE, LONDON
SWAN PICTURE HALL, WESTERHAM
SCALA THEATRE, LONDON
SHIRLEY HOUSE SCHOOL, WATFORD
SOUTH CINEMA, HACKNEY
TIVOLI THEATRE, STRAND
TOWN HALL, ALLOA

A
BULMAN
WHITE
WHITE
OPAQUE
SCREEN
IS
INSTALLED
IN THIS
THEATRE
LONDON'S
LATEST
SUPER
KINEMA

BULMAN WHITE WHITE OPAQUE SCREENS.



A
BULMAN
SCREEN
BEING
INSTALLED
IN
A
CINEMA

AND IN USE AT

EMPIRE KINEMA, PLUMSTEAD
EMPIRE KINEMA, STRATFORD
EMPIRE KINEMA, EAST HAM
EMPIRE KINEMA, WILLESDEN
ELECTRIC, BOURNEMOUTH
EALING BROADWAY
EUSTON THEATRE, LONDON
EDMONTON EMPIRE

GAIETY, SOUTHSEA
GAIETY PICTURE HOUSE, WHITEHAVEN
GLOBE, ACTON
HIPPODROME, BRIGHTON
IMPERIAL, HIGHBURY
JUBILEE HALL, WEYMOUTH
KILBURN GRANGE
KENT COUNTY HOSPITAL

MAIDA VALE, LONDON
MUSEUM CINEMA LONDON
MAJESTIC, LEEDS
MAJESTIC KINEMA, LEEK
MARLBOROUGH, YIEWSLEY
NEW GALLERY, LONDON
NEW ZEALAND PAVILION,
WEMBLEY

THE TIVOLI THEATRE, STRAND, LONDON.

BULMAN'S WHITE-WHITE OPAQUE SCREENS



A
BULMAN
WHITE
WHITE
OPAQUE
SCREEN
HAS
BEEN
INSTALLED
HERE

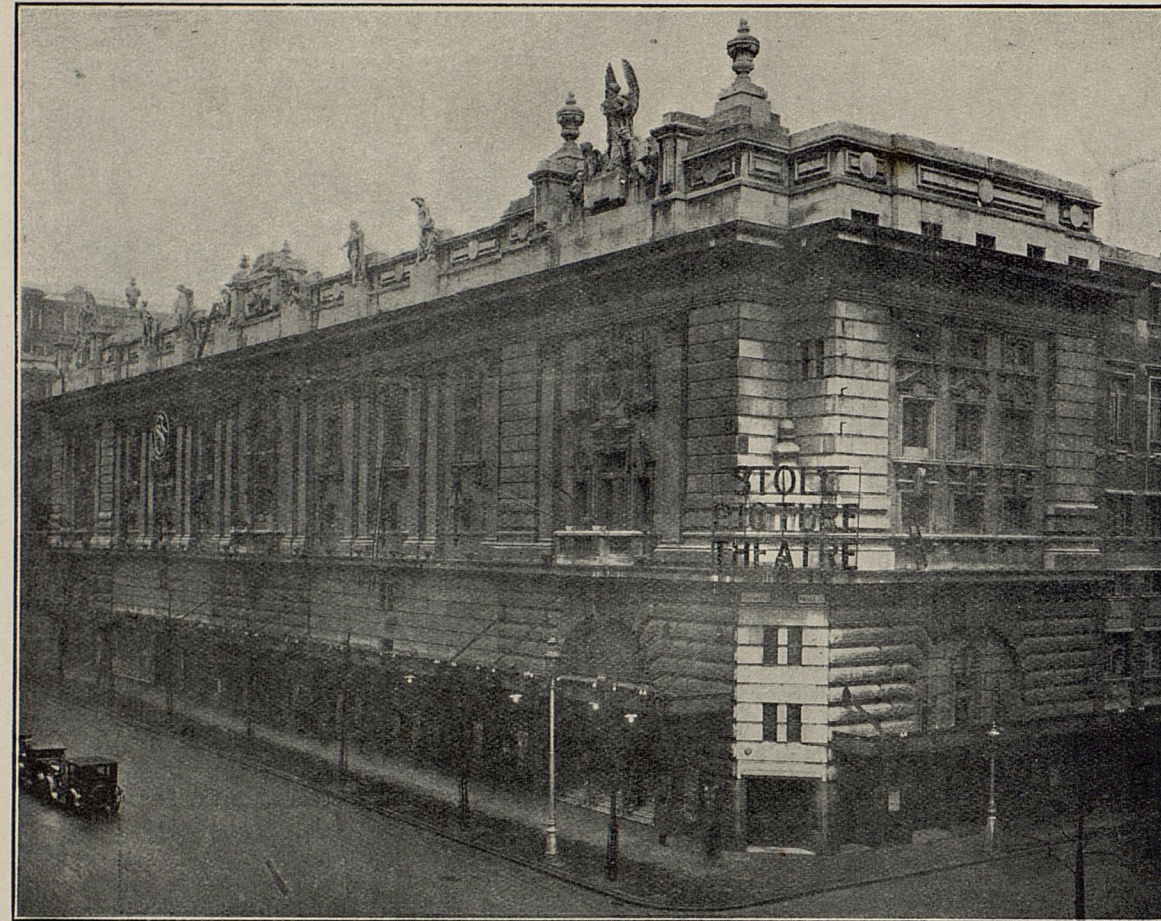
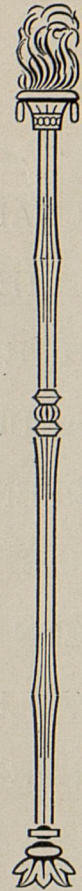
— ALSO —

NEW THEATRE, SALISBURY
OLYMPIA, LIVERPOOL
PRINCE OF WALES, HARROW ROAD
PAVILION, LONDON
PALLADIUM, BALHAM
PHILHARMONIC HALL, LONDON
PICTURE HOUSE, WILLENHALL
PICTURE HOUSE, WEDNESBURY

PICTURE HOUSE, PLYMOUTH
PICTURE HOUSE, HALIFAX
PICTURE HOUSE, SUNDERLAND
PICTURE HOUSE, EDINBURGH
PICTURE HOUSE, NEWCASTLE
PICTURE HOUSE, CHORLTON-CUM-HARDY
PICTURE HOUSE, BIRMINGHAM
PICTURE HOUSE, LEIGH

PICTURE HOUSE, ASHTON
PICTURE HOUSE, LIVERPOOL
PICTURE HOUSE, SALISBURY
PICTURE HOUSE, NOTTINGHAM
PICTURE HOUSE, ABERDEEN
PICTURE HOUSE, YORK
PICTURE HOUSE, LEEDS
PICTURE HOUSE, HULL

STOLL PICTURE THEATRE, KINGSWAY.



HAVE
INSTALLED
A
BULMAN
WHITE
WHITE
OPAQUE
SCREEN

— SO HAVE —

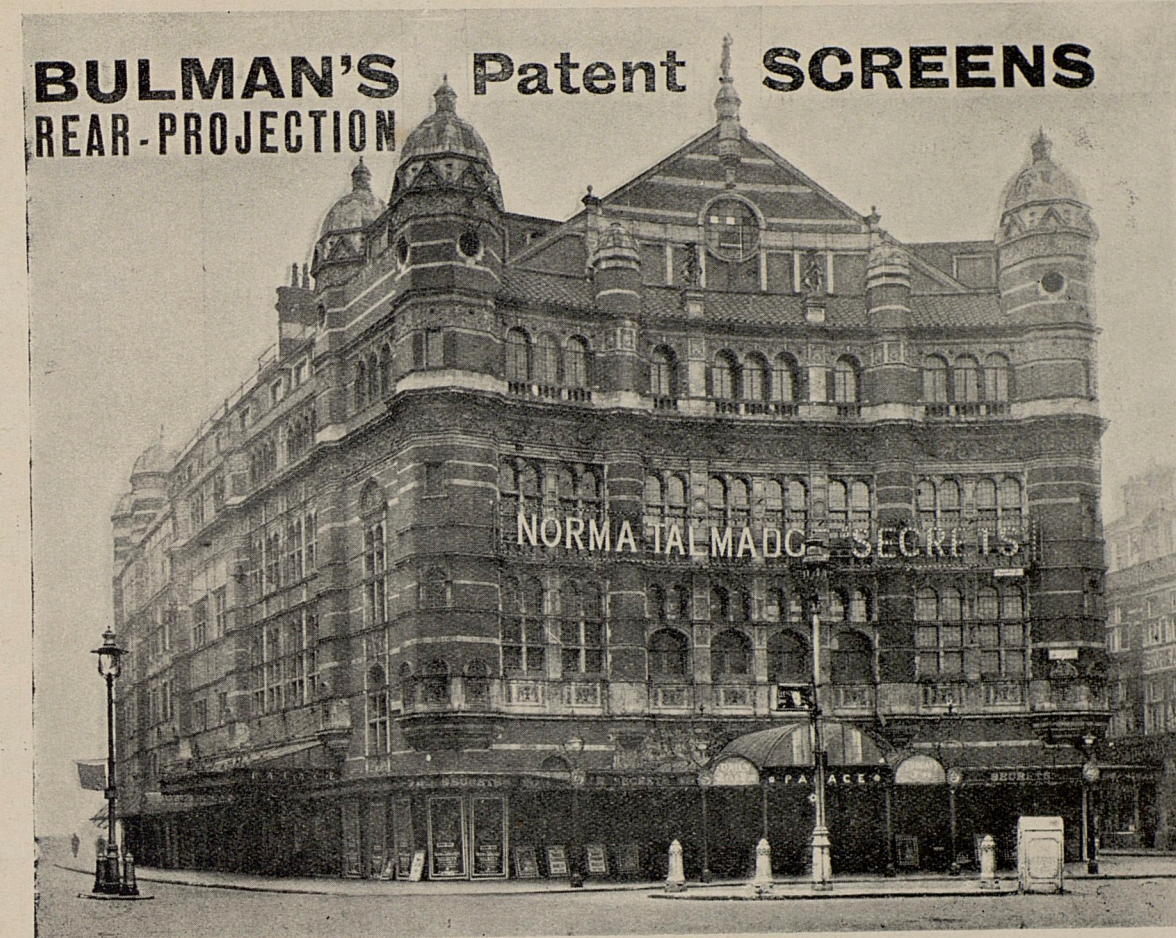
ARCADE, DARLINGTON
ALHAMBRA, DARLINGTON
ARCADE, WORCESTER
APOLLO, STOKE NEWINGTON
BROADWAY, PETERBOROUGH
BRIGGATE PICTURE HOUSE, LEEDS
BLUE HALL, ISLINGTON
BLUE HALL, ANNEXE, ISLINGTON

BERMONDSEY CINEMA
BELLE-VUE THEATRE, WEYMOUTH
BIJOU THEATRE, BRIDGWATER
BROADWAY GARDENS, WALHAM GREEN
CASTLE CINEMA, HERTFORD
CAPITOL THEATRE, HAYMARKET
COLISEUM, LONDON
CONFERENCE HALLS, WEMBLEY

CITY CINEMA, LEICESTER
COURT KINEMA, DARLINGTON
CLAPTON RINK, CLAPTON
COLISEUM, GORLESTON
DERBY CO-OP SOCIETY
PAVILION, LAVENDER HILL
EXCHANGE, NORTHAMPTON
EMPIRE KINEMA, ILFORD

THE PALACE THEATRE, LONDON.

BULMAN'S Patent **SCREENS**
REAR-PROJECTION



A
BULMAN
PATENT
SEAMLESS
REAR
PROJECTION
SCREEN
IS
INSTALLED
IN
THIS
MAGNIFICENT
THEATRE

— ALSO —

ALHAMBRA, DUMFERMLINE
ACADEMY, CAMBERLEY
BOW PALACE, BOW
BROADWAY, EALING
BROADWAY, DEPTFORD
BURMA THEATRE, WEMBLEY
CAPITOL, HORSHAM
CINERAMA, GLASGOW

CURZON HALL, BIRMINGHAM
CORPORATION, CHESTERFIELD
CHALFONT ST. PETERS
CRANWELL THEATRE, SLEAFORD
DRURY LANE, LONDON
ELITE, BRADFORD
ELECTRIC, CAMBERLEY
ELECTRIC, UPPER NORWOOD

GRAND THEATRE, HALIFAX
GRAND THEATRE, BLACKPOOL
GAIETY, DOUGLAS
KENNINGTON THEATRE
MILE END EMPIRE
NEW THEATRE, ROSS
NEW CINEMA, PORTHCAWL
OLYMPIA, TREDEGAR

TOTTENHAM PALACE, LONDON.



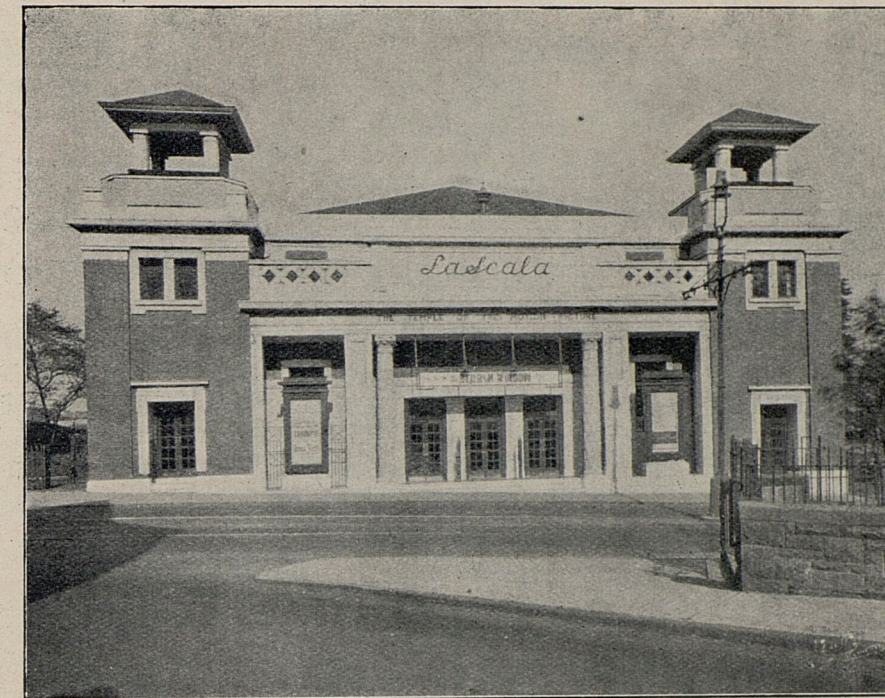
SEE THE
WONDERFUL
RESULTS
THESE
THEATRES
ARE GETTING
ON
BULMAN
PATENT
SEAMLESS
REAR
PROJECTION
SCREENS

PRINCESS, PORTSMOUTH
PAVILION, MOTHERWELL
PLAYHOUSE, MANCHESTER
PALACE, GREAT HARWOOD
PALLADIUM, ABERDARE
PALACE, BURSLEM
PALLADIUM, HARTLEPOOL
PRINCE OF WALES, HOLYWELL

PICTURE HOUSE, BUCKLEY
PALACE THEATRE, LONDON
SCALA, NOTTING HILL
SCALA, BIRKENHEAD
SCALA, STONY STRATFORD
SURREY THEATRE, LONDON
TOTTENHAM PALACE
THEATRE ROYAL, MERTHYR

HIPPODROME, LEIGH
THEATRE DE LUXE, GREENWICH
REGENT, HAYES
REGENT, PORTSMOUTH
RENDEZVOUS, CAMBRIDGE
ROYAL VICTORIA PAVILION, RAMSGATE

LA SCALA, HAMILTON.



A SPLENDID
RESULT THIS
MAGNIFICENT
THEATRE
IS GETTING
ON OUR
LAWRENCE
PATENT SCREEN

LAWRENCE PATENT SILVER SCREENS ARE ALSO INSTALLED

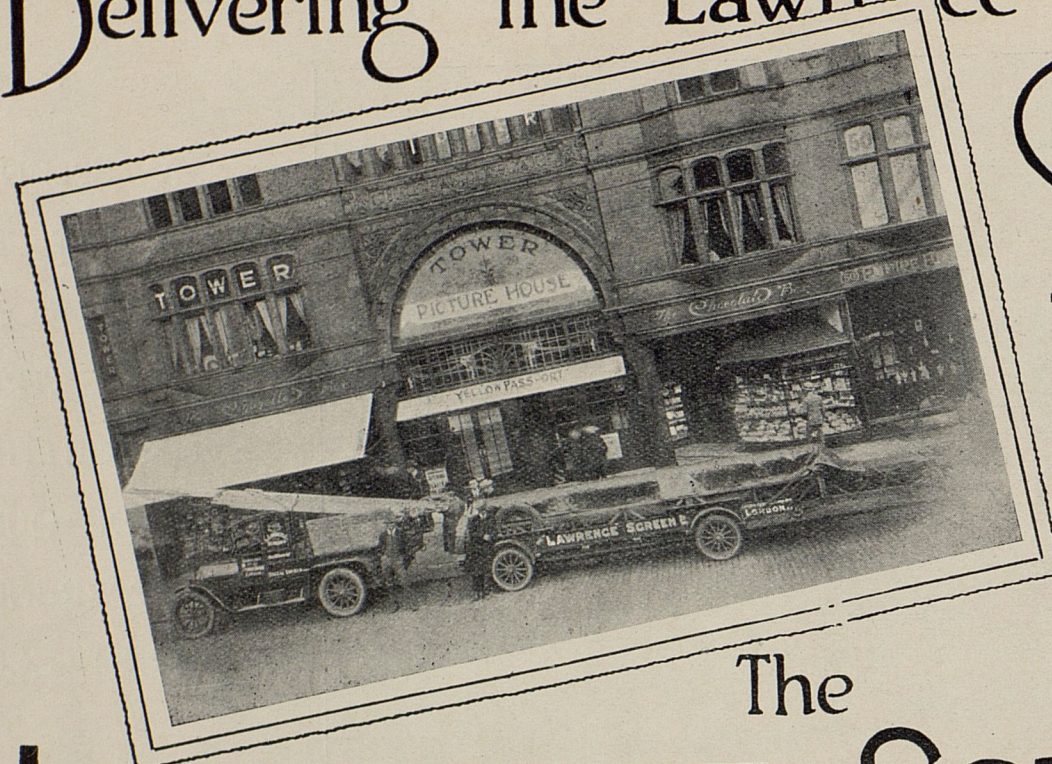
— IN —

AGRICULTURAL, WOLVERHAMPTON
ACADEMY, EAST HAM
BLUE HALLS, HAMMERSMITH
BROADWAY, HAMMERSMITH
BEAU NASH, BATH
CORONATION, MANOR PARK
CORN EXCHANGE, LINCOLN
COLISEUM, EDINBURGH
EMPIRE, CAMBERWELL

EMPIRE, CHELMSFORD
EMPIRE, STAINES
EMPIRE, LONGTON
FUTURIST, LIVERPOOL
FINSBURY PARK RINK, LONDON
GRAND HALL, CAMBERWELL
GRAND ELECTRIC, GAINSBORO
GRAND CINEMA, GILLINGHAM
HIPPODROME, LEWISHAM

HIPPODROME, WOOLWICH
HIPPODROME, BLACKPOOL
HIPPODROME, HOUNSLOW
HIPPODROME, CROYDON
IMPERIAL, SOUTHEND
IMPERIAL, BOLTON
KINGSLAND EMPIRE, LONDON
LEICESTER SQUARE CINEMA
LYCEUM, SOUTHFIELDS

Delivering the Lawrence Screen by



**SPECIAL
MOTOR**

at the
**Tower
Picture
House**
Leeds.

The LAWRENCE SCREEN

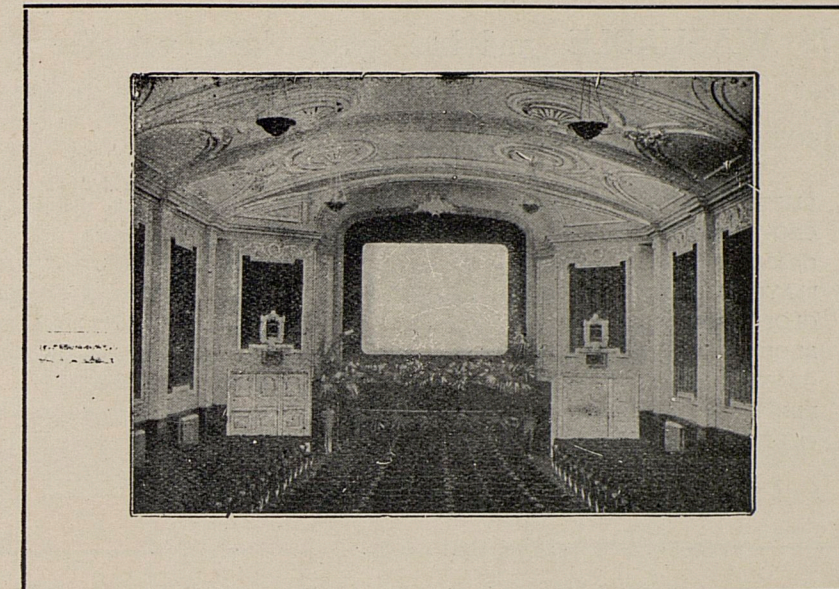
LAWRENCE PATENT SILVER SCREENS ALSO INSTALLED AT

MAJESTIC, PORTSMOUTH
MARLBOROUGH, HOLLOWAY
NEW RENDEZVOUS, BLACKPOOL
OXFORD PICTURE HOUSE,
MANCHESTER
PRINCESS, BLACKPOOL
PICCADILLY CIRCUS CINEMA
PALAIS DE LUXE, WOOD GREEN

PALACE DE LUXE, BROMLEY
PICTURE HOUSE, MALDEN
PLAYHOUSE, LOUTH
PALLADIUM, CROYDON
PALLADIUM, WOOD GREEN
PALLADIUM, HALIFAX
PLAYHOUSE, WAKEFIELD
PICTURE HOUSE, GLASGOW

PRINCE OF WALES, LEWISHAM
PREMIER SUPER CINEMA, EAST HAM
QUEEN'S HALL, ENFIELD
QUEEN'S, FOREST GATE
RIVOLI, WORTHING
REGENT, NORWICH
PICTURE HOUSE, SOUTHAMPTON
PAVILION, FALKIRK

PICTURE HOUSE, IPSWICH.



PERLANTINO
BEADED
SCREEN
INSTALLED
14 YEARS
STILL GIVING
WONDERFUL
RESULTS.



INSTALLED ALSO AT

BROADWAY, PETERBORO
CASTLE CINEMA, CARDIFF
CARLTON, TOTT. COURT RD.
EMPIRE, HANLEY
ELECTRIC, COMMERCIAL RD.
GRAND, BROMLEY

GRAND, HOLLOWAY
GRAND, BARKING
GRAND CINEMA, STRAND
KINEMA PALACE, HULL
OLYMPIA, WOLVERHAMPTON
PICTURE HOUSE, IPSWICH

PALACE, DUNDEE
PICTUREDROME,
WOLVERHAMPTON
PICTURE HOUSE, PAISLEY
PICTURE HOUSE, SWANSEA
SCALA, DUNDEE
TROCERDERO, MANCHESTER

THE BRITISH PATENT SURBRITE CRYSTAL SCREEN

THE ABOVE SCREEN IS WASHABLE and has given long valuable service in some of England's finest Super Kinemas. We give you herewith a list of a few Theatres where we have installed this Screen.

ALEXANDRA PICTURE THEATRE, BRADFORD	CLIFTON CINEMA, MARGATE	TOWER PICTURE HOUSE, PECKHAM
AMHURST HALL, HACKNEY	CROYDON PICTURE HOUSE, NOTTINGHAM	OLYMPIA, CARDIFF
ANGEL THEATRE, ISLINGTON	GRAND ELECTRIC WAKEFIELD	ROYAL ELECTRIC, COVENTRY
COLLINS CINEMA, BATLEY	PLAYHOUSE, BROOMSGROVE	PAVILION THEATRE, CORK
CINEMA THEATRE, CARDIFF	GLOBE, PORTSMOUTH	MONICA PICTURE HALL, HULL
CARLTON CINEMA, DUBLIN	REGENT THEATRE, CHELMSFORD	LYRIC ELECTRIC, HANLEY
CINEMA PALACE, GOOLE	GRAND HALL, FINCHLEY	EMPIRE, ROTHERHAM
CINEMA DE LUXE, HASTINGS	KING'S CROSS CINEMA	"DON" CINEMA, STOCKPORT
CINEMA, HARROW	OLDFIELD PICTURE HOUSE, BATH	CARFAX, HORSHAM
	etc., etc., etc.	

The Patent Petra Fireproof Rear Projection Screen

Special Estimates given for above
Screen on receipt of particulars

Demonstrations of any make of Screen given by appointment at our own Private Theatre. Testing samples sent on application. If you are at any time doubtful as to which Screen you should instal, phone or write us, we will have the greatest pleasure in sending our expert to advise you.

PRICE LISTS.

IMPORTANT NOTICE.—The L.C.C. demand that all Screens in their area shall be fixed to Oak Frames, and in special cases must be backed with Uralite or Poilite. Estimates will be given to meet each separate requirement.

BULMAN WHITE WHITE OPAQUE SCREENS (SEAMLESS) installed on specially braced deal frame, finished with 22" black velvet, or all wool border, erected complete at Theatre **4/-** sq. ft. Nett. If erected outside London, two men's return fares charged extra.

BULMAN WHITE WHITE OPAQUE SCREENS installed on specially braced deal frame, finished with 22" black velvet, or all wool border, erected complete at Theatre **3/-** sq. ft. Nett. If erected outside London, two men's return fares charged extra.

BULMAN SEAMLESS WHITE WHITE OPAQUE SCREENS made on roller and top lath in wood case complete **3/-** sq. ft. F.O.R. London. Cords and pulleys **10/-** to **21/-** extra according to size of SCREEN.

BULMAN WHITE WHITE OPAQUE SCREENS made on roller and top lath, in wood case complete ready for transit **2/-**, **1/-** & **9d.** sq. ft. F.O.R. London. Cords and pulleys **10/-** to **15/6** extra according to size of SCREEN.

BULMAN WHITE WHITE OPAQUE SCREENS cleaned and recoated at Theatre with WHITE OPAQUE SCREEN DRESSING from **£6 : 10 : 0** plus two men's fares outside London. This work is carried out during night so as not to interfere with performance.

Special WHITE OPAQUE SCREEN DRESSING **45/-** gallon. Special brushes **8/6** to **12/6** each.

SCREENS fixed on trolley wheels to run back on stage **£2 : 2 : 0** to **£5 : 5 : 0** extra. Flying irons **8/6** to **15/6** extra according to size of screen.

LAWRENCE PATENT SILVER SCREENS (SEAMLESS) erected at Theatre 5/6 sq. ft. 6/- Scotland. Frames extra according to size and timber required. Masking extra according to material and width required.

LAWRENCE PATENT SILVER SCREENS washed at Theatre by our own experienced staff, from £6 : 10 : 0 plus two men's return railway fares outside London.

LAWRENCE PATENT SILVER SCREENS cleaned and retreated with LAWRENCE Patent Process at our Studios, we erect a temporary SCREEN during retreating, special estimates given.

BRITISH PATENT PERLANTINO BEADED SCREENS (SEAMLESS) erected at Theatre 5/6 sq. ft. 6/- Scotland. Frames extra according to size and timber required. Masking extra according to material and width required. Plus two men's return railway fares outside London.

BRITISH PATENT PERLANTINO BEADED SCREEN washed at Theatre by our own experienced staff from £4 : 4 : 0 plus two men's return fares outside London.

BRITISH PATENT SURBRITE CRYSTAL SCREEN erected at Theatre 5/6 sq. ft., 6/- Scotland. Frames extra according to size and timber required. Masking extra according to material and width required, plus two men's return railway fares outside London. Surbrite Screen Preparation £4 : 4 : 0 gallon, carriage paid. Brushes 8/6 to 12/6 each.

BULMAN PATENT REAR PROJECTION SCREENS (SEAMLESS) installed on specially braced oak frame finished 22" black velvet or all wool border, erected complete at Theatre 5/6 per sq. ft. 6/- Scotland. (Outside London, two men's return railway fares extra.)

BULMAN PATENT SEAMLESS REAR PROJECTION SCREENS installed on specially braced oak frame erected at Theatre without Border, 4/- sq. ft. 5/- Scotland. (Outside London, two men's return railway fares charged extra.)

BULMAN PATENT SEAMLESS REAR PROJECTION SCREENS made complete on roller and top lath in wood case 3/- sq. ft. F.O.R. London. Cords and Pulleys 10/- to 21/- extra according to size of SCREEN.

BULMAN PATENT SEAMLESS REAR PROJECTION ADVERTISING SCREENS for Semi-Daylight 2/6 and 2/- sq. ft. Frames and masking extra according to size.

BULMAN PATENT REAR PROJECTION SCREENS washed and recoated at Theatres from £3 : 3 : 0 plus two men's return railway fares outside London. This work is carried out overnight so as not to interfere with performance.

SCREENS fixed on trolley wheels to run back on stage £2 : 2 : 0 to £5 : 5 : 0 extra.

BULMAN SILVER OPAQUE SCREENS (SEAMLESS) erected on specially braced oak frame at Theatre, finished with 22" black velvet border, 4/6 sq. ft. (Outside London two men's return fares charged extra.)

BULMAN SILVER OPAQUE SCREENS (SEAMLESS) made on roller and top lath in wood case complete 3/- sq. ft. F.O.R. London.

BULMAN SILVER OPAQUE SCREENS made complete on roller and top lath in wood case 2/- sq. ft. F.O.R. London.

BULMAN HOME CINEMA SILVER OPAQUE SCREENS on roller and top lath finished with cover 1/6 sq. ft. F.O.R. London.

BULMAN SPECIAL SILVER OPAQUE SCREEN DRESSING 63/- per gallon, carriage paid. Brushes 8/6 to 12/6 each.

ESTIMATES GIVEN FOR CURTAINS, PELMETS, COUNTERWEIGHTING, STAGE SETTINGS, COLOUR SCHEMES & FIRE CURTAINS.

DAYLIGHT PICTURES Complete equipments (including Cars) quoted for on application.

HIRE DEPARTMENT.

SCREENS, FRAMES, ALSO BORDERS
CAN BE HIRED AT VERY LOW PRICES.

ESTIMATES GIVEN ON
APPLICATION.

SCREENS BACKED WITH URALITE OR
POILITE TO L.C.C. REGULATIONS.

ESTIMATES GIVEN ON
APPLICATION.

PLEASE NOTE.

When ordering a NEW CINEMA SCREEN take the following measurements of your Theatre.

The length of your throw.

The distance the farthest seat is away from the SCREEN.

The width of your hall.

Please also let us know whether you have side boxes—if so, the distance the nearest box is away from the SCREEN.

By letting us have the above particulars, we will advise you which SCREEN is suited to your hall.

We ask the above questions because of the following:—

- (1) The SCREEN you instal must give a clear and distinct picture from every seat in your Theatre.
- (2) It is useless having a SCREEN installed if from any of your seats on the side, the picture is the least distorted. You want to fill those seats as many times as you do the rest of your Theatre otherwise you will lose money. You must have a clear picture for the Public of to-day.

BULMAN SCREENS GIVE YOU A CLEAR PICTURE FROM EVERY SEAT IN YOUR HALL.

Telephones :

REGENT 3309-3310.

Night CLISSOLD 4778.



Studios & Works:

STAMFORD HILL
& ENFIELD.

